

MOUNTING INSTRUCTIONS

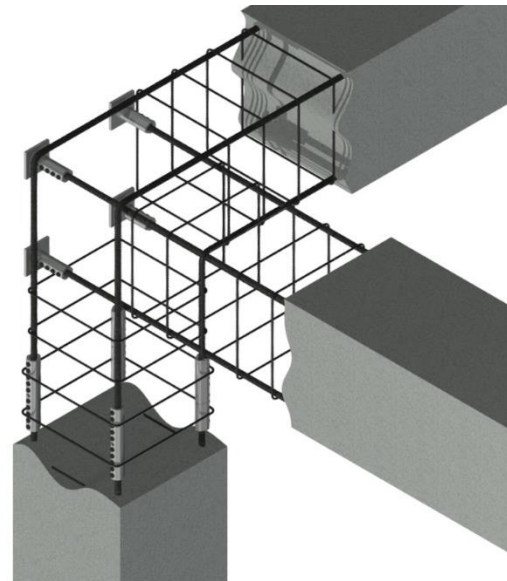
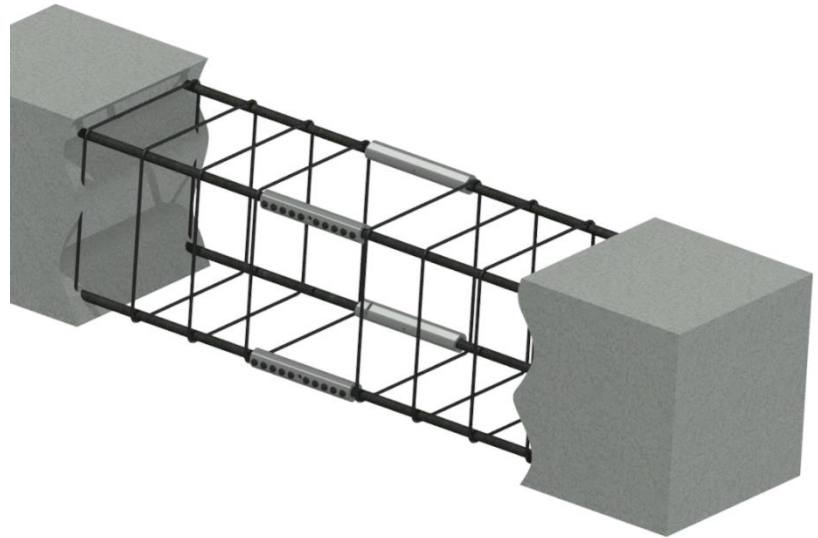
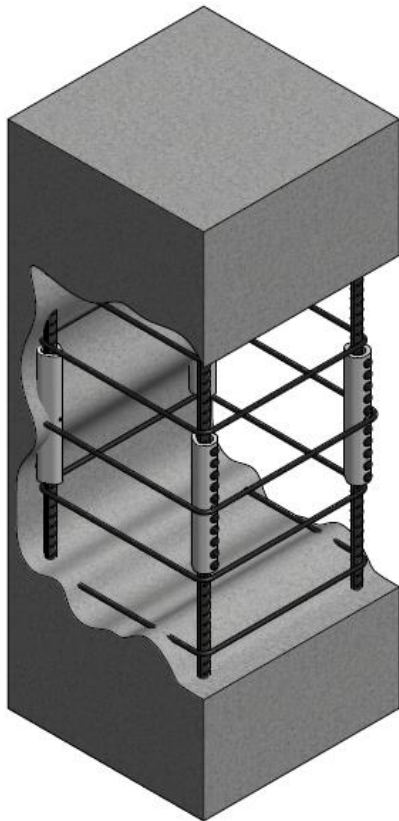


ALLIGATOR COUPLERS | **SN** **DOUBLE HEADED SCREW PLUG**



THE MAIN APPLICATIONS FOR ALLIGATOR COUPLERS

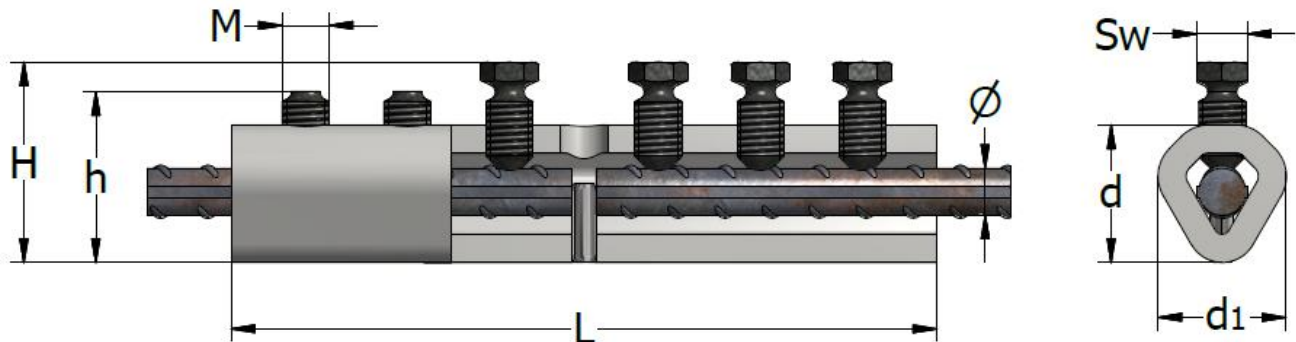
- for column construction
- to extend or repair existing structures
- to connect precast element to precast element
- to close access openings
- for the pre-fabrication of the reinforcing bar cage
- for fatigue applications



ALLIGATOR COUPLING – ALC

The ALLIGATOR COUPLING ALC is used for the connection of reinforcing bars of the same size. The product has a pin and an inspection hole in the middle for correct installation. The breaking bolts are designed to shear off at the torque moment specified in the table below.

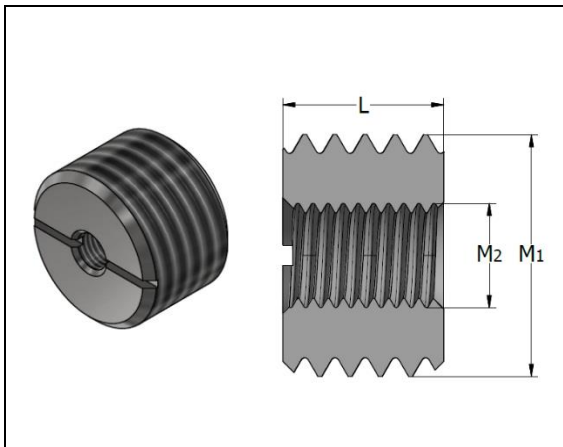
Tighten the bolts using a torque wrench, an impact, electric or pneumatic wrench. Please see page 5-6.



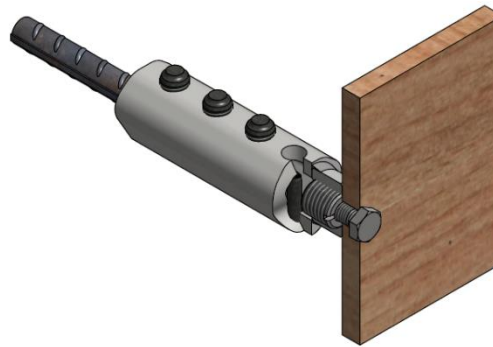
Type ALC	Product no.	Rebar Ø [mm]	Breaking bolt		Breaking bolt thread M	L [mm]	d [mm]	d1 [mm]	H Unruptured Bolt [mm]	h [mm]	SW [mm]	Torque moment [Nm]
			n	Product no.								
10	44633	10	6	50685-1	M12	160	33	34	Max. 46	36	13	95-115
12	44634	12	6	50685-1	M12	180	33	34	Max. 49	39	13	95-115
14-16	43071	14/16	8	50685-1	M12	230	37	38	Max. 55/57	45/47	13	95-115
18	43072	18	10	50685-1	M12	280	44	42	Max. 59	49	13	95-115
20-22	65681	20/22	10	50686-1	M16	290	50	50	Max. 63/67	51/55	17	190-215
25	43075	25	12	50686-1	M16	390	55	54	Max. 72	60	17	190-215
26	63079	26	12	52295	M20	420	63	62	Max. 83	68	22	355-415
28	43076	28	12	52295	M20	420	63	62	Max. 85	70	22	355-415
30	63080	30	14	52295	M20	480	70	69	Max. 87	72	22	355-415
32	43077	32	14	52295	M20	480	70	69	Max. 92	77	22	355-415
36	43078	36	16	52295	M20	540	77	74	Max. 99	84	22	355-415
40	43079	40	18	52295	M20	580	76	74	Max. 101	86	22	355-415

DOUBLE THREADED SCREW PLUG SN

SN threaded screw plug is used to affix the ALC-SK to the formwork. The external thread fits inside the ALC-SK threaded bush and the inner diameter to secure the attachment to the formwork using a standard threaded bolt.



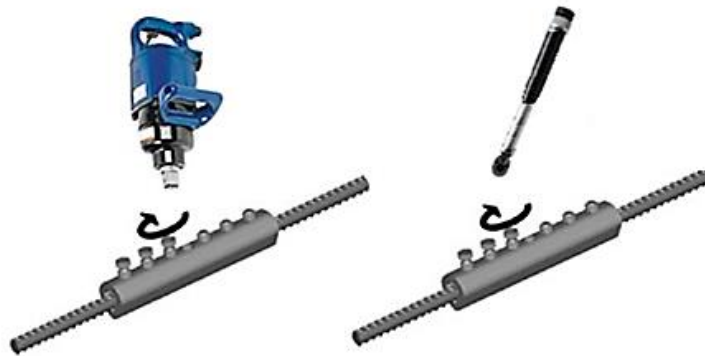
SN	Product no.	Thread		L [mm]
		M1	M2	
SN M12-M6	45214	12	6	16
SN M16-M8	45215	16	8	16
SN M20-M8	45216	20	8	16
SN M24-M8	46303	24	8	16
SN M24-M10	45217	24	10	16
SN M30-M10	45218	30	10	16
SN M30-M8	46079	30	8	16
SN M36-M10	45219	36	10	25
SN M42-M10	45220	42	10	30
SN M48-M10	45464	48	10	36
SN M48-M12	46525	48	12	36
SN M48-M16	46524	48	16	36



TOOLS FOR ALLIGATOR COUPLERS

- Use a high-speed, high-impact electric torque wrench or pneumatic wrench – we recommend a minimum of 1000 Nm.
- Try to prevent additional momentum when mounting/shearing off the bolts.
- When using an air impact wrench, check the air pressure, torque rating and air flow requirements before starting the installation process.
- Removing/shearing off bolt heads is not required if appropriate bolt torque is attained. In this case, please consult the table on page 3; the minimum height “H” has to be reached.
- When there is not enough space in the element to use a pneumatic or electric wrench, a handheld torque wrench can be used to shear the bolt or to attain the torque momentum according to the table on page 3. The wrench momentum has to be a minimum of 2x the breaking bolt torque.
- Using hardened, heavy-duty sockets with a maximum external diameter is recommended; see the table below.

Type ALC	Breaking bolt Thread M	SW / [mm]	Maximum socket wrench diameter /[mm]		
10	M12	13	Ø 26		
12, 14-16, 18	M12	13	Ø 36		
20	M16	17	Ø 27		
22, 25	M16	17	Ø 39		
28, 32, 36, 40	M20	22	Ø 33		



The above-mentioned wrenches with the tooling necessary for shearing off bolts M12, M16 and M20 are available in boxes.



60627

ALC Electric Mounting Kit



60626

ALC Pneumatic Mounting Kit

Aluminium box	Product no.	Type wrench	Torque moment (NM)
1	60627	Electric	1000
2	60626	Pneumatic	1000-1898



CONTACT

TERWA is the global supplier for precast and construction solutions with multiple offices around the world. With all our staff, partners and agents, we are happy to provide all construction and precast companies who work in the building industry with full service and 100% support.

TERWA CONSTRUCTION GROUP**Terwa Construction Netherlands (HQ)**

Global Sales & Distribution
Kamerlingh Onneslaan 1-3
3401 MZ IJsselstein
The Netherlands
T +31-(0)30 699 13 29
F +31-(0)30 220 10 77
E info@terwa.com

Terwa Construction Central East Europe

Sales & Distribution
Strada Sânzieni
507075 Ghimbav
Romania
T +40 372 611 576
E info@terwa.com

Terwa Construction Poland

Sales & Distribution
Ul. Cicha 5 lok. 4
00-353 Warszawa
Poland
E info@terwa.com

Terwa Construction India & Middle East

Sales & Distribution
India
T +91 89 687 000 41
E info@terwa.com

Terwa Construction China

Sales & distribution
5F 504, No. 101 Chuanchang road
PRC, 200032, Shanghai
China
E info@terwa.com

ALL SPECIFICATIONS CAN BE CHANGED WITHOUT PREVIOUS NOTICE.

DISCLAIMER

Terwa B.V. is not liable for deviations due to wear of the products it has delivered. Neither is Terwa B.V. liable for damage due to inaccurate and/or improper handling and use of the products it has delivered and/or use of same for purposes other than those intended.

Terwa B.V.'s responsibility is furthermore limited in accordance with article 13 of the "Metaalunie" conditions, which are applicable for all Terwa B.V. deliveries. The user is responsible for ensuring compliance with all applicable copyright laws. Without limiting the rights under copyright, no part of this documentation may be reproduced, stored in or introduced into a retrieval system, or transmitted in any form or by any means (electronic, mechanical, photocopying, recording, or otherwise), or for any purpose, without the express written permission of Terwa B.V.